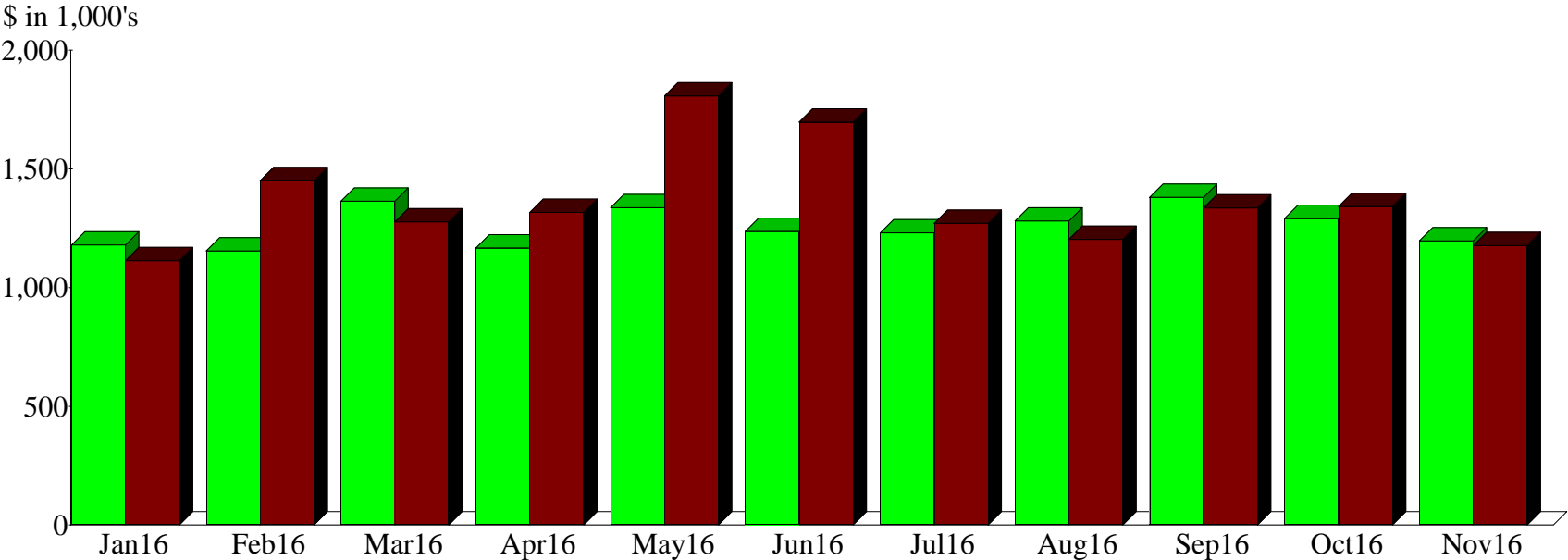
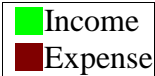
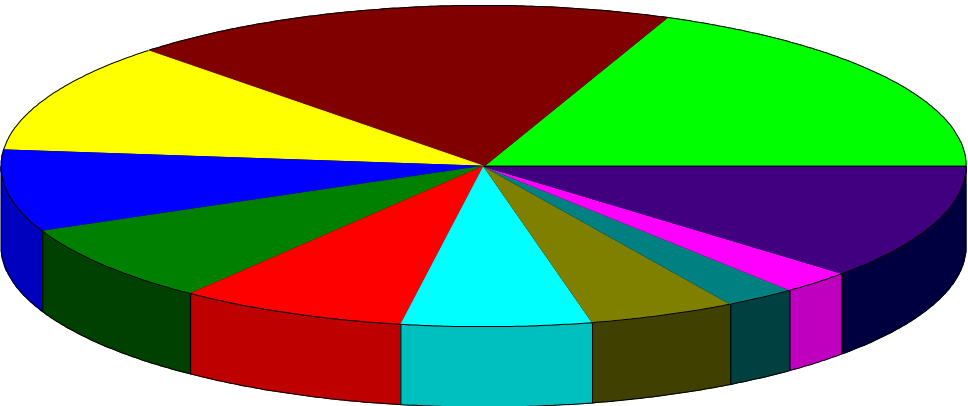


Income and Expense by Month
January through November 2016



Expense Summary
January through November 2016

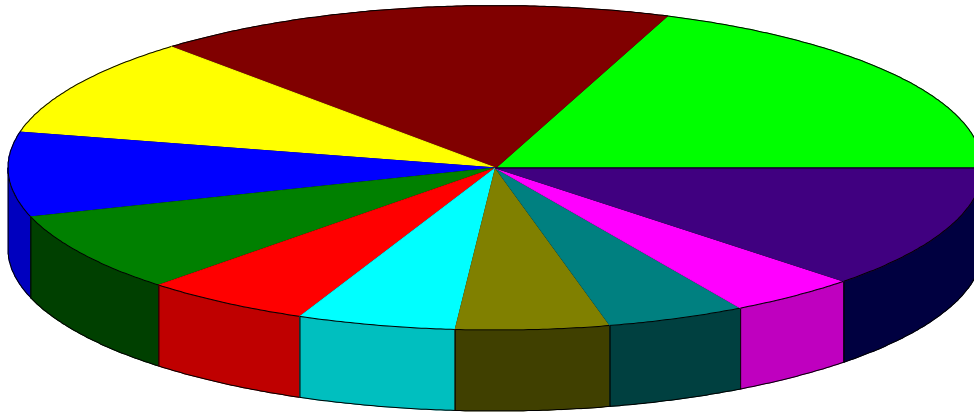


6130 · Union Leave	18.94%
5820 · Legal Fees	18.59
5840 · Public Relations	11.18
5760 · Travel Costs	8.30
5100 · Employee Payroll (Salary, Hourly	8.01
5920 · Sector Operations	7.70
5680 · Member Benefits	6.49
50500 · Rainy Day Fund - Norvest	5.09
5725 · Political Action Contributions	2.45
5200 · Taxes & Fringe Benefits (all frin	2.44
Other	10.83
Total	\$14,991,190.73

By Account

Expense Summary
January through November 2016

5726 · Legislative Related Expense (rela	2.09%
5930 · Charity \$500 per Sector	1.89
8000 · Building Expenses	1.08
5735 · Printing & Outside Copying	0.92
5750 · Office Expenses	0.88
5640 · Depreciation and Amortization	0.61
6000 · Telephone	0.57
5810 · Consulting and Temporary Staff	0.55
5800 · Professional Fees Accounting	0.51
5730 · Postage & Mailings	0.47
Other	1.25
Sub-Total	\$1,622,991.94



By Account